



L & M Mfg., Inc.

10403 West Miller School Road – North Platte, NE 69101

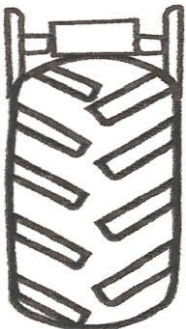
308-532-4856 or 800-676-DRIP(3747) 308-532-4876-FAX 308-726-5487-Cell

www.dripwell.com (see web site for more products from L & M Mfg., Inc.)

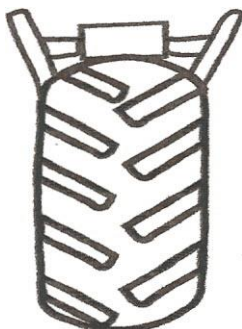
MUD LUG INSTRUCTIONS

Unpack and connect two pieces using the supplied bolt. It is important that the MUD LUG is adjusted to fit the tire before use. Place it on the tire and adjust the MUD LUG to fit tight against the side of the tire, and parallel with the sides as shown. If not, it could damage the drive shaft.

Always check for clearances.



CORRECT



INCORRECT

Adjust the bottom angle irons to fit tightest against the rim. There are four adjustments including reversing the angle iron.

Select the right adjustment on the MUD LUG paddle so that the paddle wedges tight in the middle of the wedge plates. There are three adjustments.

WARNING

If the MUD LUG is not properly mounted, it may slip. Even when properly mounted it may move until tight. Therefore, always place it behind the valve stem. Only YOU can determine the correct fit. Use on 38 inch tires may require MUD LUG on each tire due to increased torque. Use at your own risk.

We find it to be most effective if you do not leave the MUD LUG unattended.

It is most convenient if one individual controls the pivot at the panel while another individual supervises the stuck tower and MUD LUG.

Your MUD LUG is fully guaranteed against manufacturer defect for the first season of use. Call the above number for questions or warranty.